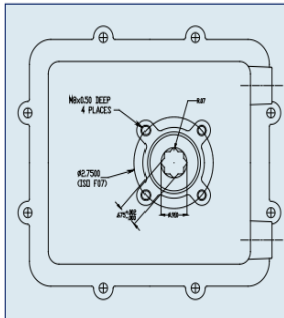
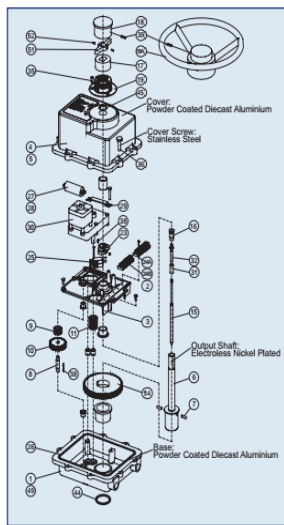


# ACTUATOR T051 by ASAHI-AMERICA

# DATA SHEET

The electrical Rotary actuator was designed for our control valve applications in surface and with a posiciometro of precision. This actuator has been manufactured for over twenty-five years and has an impeccable reputation for reliability in applications requiring a constant top performance year after year. This machine has a transmission gear of hardened steel which guarantees high efficiency, quiet operation and long service life without problems, is UL certified



ACTUATOR T051 by Asahi-America		
NO.	PCS	Description
1	1	Base
3	1	Base Plate
4	1	Cover
6	1	Shaft Main
6A		Shaft Main
7	2	Pin
8		Shaft Stub
9		Spur Gear B1
10		Spur Gear A1
11	1	Gear Pinion
14	1	Gear Main
15	1	Shaft Inner
15A		Shaft Inner
16	1	Shaft Retainer
17	1	Knob Lower
18	1	Knob Upper
18A		Handwheel
19	1	Collar
23	2	Cam
24A	1	Terminal Block 1-8
24B	1	Terminal Block 9-16
25	2	Switch
26	1	O-Ring Base/Cover
27	1	Capacitor 4.2 mFD
27A		Capacitor 6.7 mFD
28		Capacitor 7.6 mFD
29	1	Capacitor Bracket
30	1	Motor
31	1	Shell
32	1	Spring
32A		Spring
35	3	Collar Screw
36	8	Cover Screw
38	1	Key, Woodruff 3/32
39	1	Knob Set Screw
44	1	Seal Base
45	1	Seal Cover
51		Handwheel Cam
52		Cam Set Screw

## SPECIFICATIONS:

TORQUE	400 lbf.in (45.2 Nm)
CYCLE TIME	75%
VOLTAGE	24 VDC
POWER CONSUMPTION	Free rotation 0,90 Amp Blocked rotation 3,2 Amp
CASING	NEMA 4X, 7 Molded aluminium building
WEIGHT	15.3 lb
LUBRICATION	Grease, maintenance free.
INSTALLATION	ISO mounting. Anticondensation system
TEMPERATURE RANGE	-40 °F a 150 °F Heater and thermostat at 0 °F required
SIGNAL	4 a 20 milliamperes
CAPACITY	Multi-turn
EVENTUAL STOP	Maintains it's last position
EXTRAS	- Heating - Flywheel - Alternative Energy - Signal repeater

